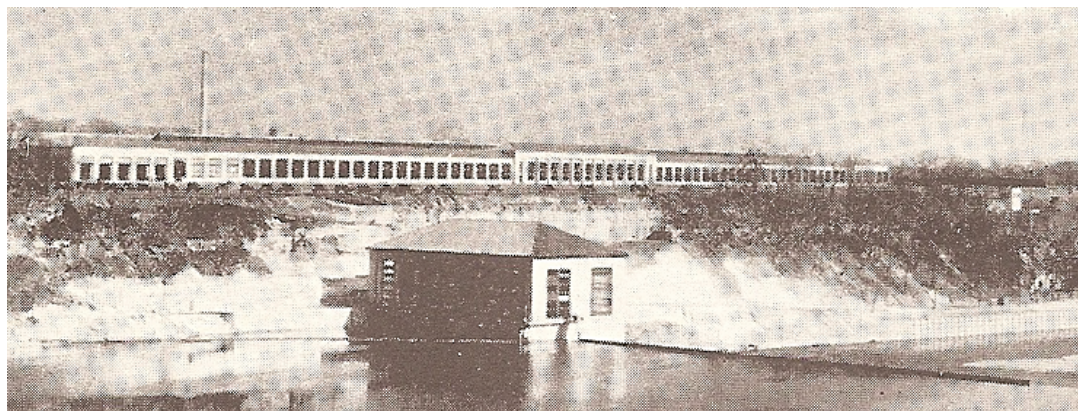


Ford Motor Company

TWIN CITY (ST. PAUL), MINNESOTA



FORD'S TWIN CITY, MINNESOTA ASSEMBLY PLANT

LOCATION: 117 UNIVERSITY AVENUE

MILES FROM DEARBORN: 696

ASSEMBLY PLANT PRODUCTION CODES: TC

PARTS ARRIVED FROM DEARBORN BY: RAIL

OPENING DATE FOR MODEL A FORD PRODUCTION: UNKNOWN
BEFORE MARCH 31, 1928

CLOSING DATE FOR MODEL A FORD PRODUCTION: UNKNOWN

TOTAL PRODUCTION:

1928...31,529

1929...82,347

1930...55,142

1931...22,873

TOTAL...191,891

ACCORDING TO THE 1927 ASSEMBLY RECORDS, 188 MODEL A AND AA FORDS WERE SENT TO VARIOUS "ASSEMBLY PLANTS" IN 1927. NO RECORD EXISTS TELLING WHICH ASSEMBLY PLANTS RECEIVED WHAT AND HOW MANY MODELS OF EACH TYPE. THESE CARS AND TRUCKS, NO DOUBT, WERE USED IN THE TOOLING UP OF EACH ASSEMBLY PLANT FOR MAJOR PRODUCTION OF THE "NEW FORD".

BILL OF SALES
TWIN CITY, MINNESOTA
As of May 3, 2009

ASSEMBLY PLANT- BILL OF SALES
TWIN CITY, ST PAUL, MINNESOTA (TC)
696 MILES FROM DEARBORN

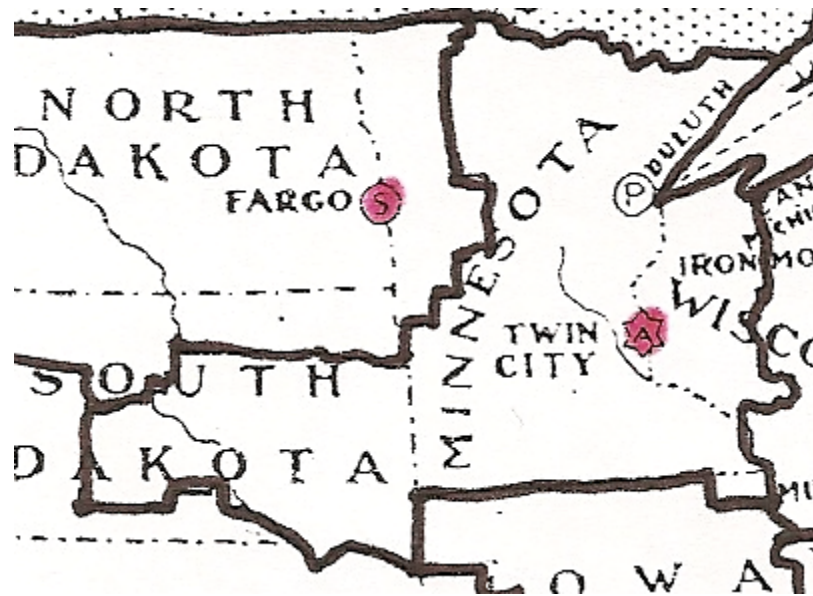
ENGINE NUMBER	STAMP DATE	DATE SOLD	VEHICLE TYPE	DEALER TOWN	INVOICE NUMBER	DAY TO SALE

DEALERSHIP- BILL OF SALES
TWIN CITY, ST. PAUL, MINNESOTA (TC)
696 MILES FROM DEARBORN

ENGINE NO.	STAMP DATE	DATE SOLD	VEHICLE TYPE	DEALERSHIP TOWN	DAYS TO SALE
1886189 (1)	07/06/29	08/30/29	TUDOR	VIRGINIA, MN	54
4244779 (1)	01/13/31	07/06/31	DL. TUDOR	DULUTH, MN	173

THANKS TO: 1. PETER WINNEWISSER;

IF YOU HAVE ANY MODEL A FORD FACTORY OR DEALERSHIP BILL OF SALE DATA THAT COULD BE INCLUDED IN THIS STUDY, INCLUDING ANY "KEY" DATA, PLEASE FILL OUT THE QUESTIONNAIRE AT THE END OF THIS STUDY AND SEND IT TO steve@plucks329s.org or to Steve C. Plucker, 12650 Touchet North Road, Touchet, Washington 99360



**SALES AREA FOR FORD'S ASSEMBLY PLANT IN TWIN CITY,
MINNESOTA
FROM THE 1926 ISSUE OF FORD INDUSTRIES**