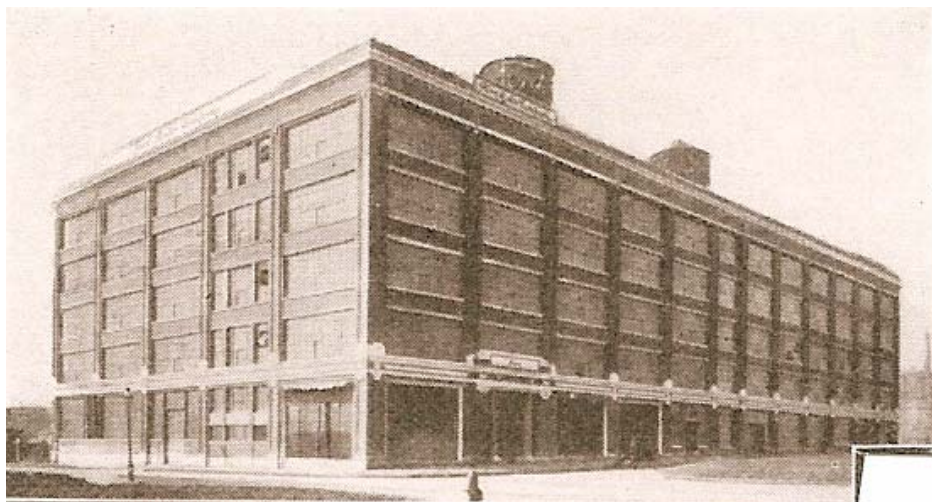


*The Ford Motor Company*

ST. LOUIS, MISSOURI



**FORD'S ST. LOUIS, MISSOURI ASSEMBLY PLANT**

**LOCATION: 4100 FOREST PARK BLVD.**

**MILES FROM DEARBORN: 547**

**ASSEMBLY PLANT PRODUCTION CODE: STL or AXSTL**

**PARTS ARRIVED FROM DEARBORN BY: RAIL**

**OPENING DATE FOR MODEL A FORD PRODUCTION: UNKNOWN**

**SOMETIME IN FEBRUARY, 1928????**

**CLOSING DATE FOR MODEL A FORD PRODUCTION: UNKNOWN**

**TOTAL PRODUCTION:**

**1928...25,653**

**1929...43,112**

**1930...34,347**

**1931...18,259**

**TOTAL...121,371**

ACCORDING TO THE 1927 ASSEMBLY RECORDS, 188 MODEL A AND AA FORDS WERE SENT TO VARIOUS "ASSEMBLY PLANTS" IN 1927. NO RECORD EXISTS TELLING WHICH ASSEMBLY PLANTS RECEIVED WHAT AND HOW MANY MODELS OF EACH TYPE. THESE CARS AND TRUCKS, NO DOUBT, WERE USED IN THE TOOLING UP OF EACH ASSEMBLY PLANT FOR MAJOR PRODUCTION OF THE "NEW FORD".

**BILL OF SALES**  
ST. LOUIS, MISSOURI  
**As of May 3, 2009**

**ASSEMBLY PLANT- BILL OF SALES**  
ST. LOUIS, MISSOURI (AXSTL, STL)  
**547 MILES FROM DEARBORN**

ENGINE NUMBER	STAMP DATE	DATE SOLD	VEHICLE TYPE	DEALER TOWN	INVOICE NUMBER	DAY TO SALE
2852241 (1)	02/11/30	02/17/30	OCPU	CONWAY, MO	I98985	06
2933932 (3)	02/27/30	03/18/30	2-DR. SEDAN	CONWAY, MO	UNKNOWN	21
2984033 (3)	03/07/30	03/18/30	STD. COUPE	CONWAY, MO	UNKNOWN	11
4156748 (1)	11/19/30	01/21/31	VICTORIA	CONWAY, MO	K6682	62
4316987 (1)	02/02/31	02/16/31	VICTORIA	CONWAY, MO	K7610	14
4518424 (1)	03/31/31	01/21/32	PHAETON	CONWAY, MO	L56219	261
4624408 (6)	05/05/31	05/20/31	STD. COUPE	CONWAY, MO	UNKNOWN	15
4710586 (1)	06/08/31	06/19/31	OCPU	CONWAY, MO	L4317	11

**DEALERSHIP- BILL OF SALES**  
ST. LOUIS, MISSOURI (AXSTL, STL)  
**547 MILES FROM DEARBORN**

ENGINE NO.	STAMP DATE	DATE SOLD	VEHICLE TYPE	DEALERSHIP TOWN	DAYS TO SALE
0124811 (2)	05/09/28	05/31/28	TUDOR	ST. LOUIS, MO	22
1526428 (6)	05/08/29	05/14/29	TN. SEDAN	E. ST. LOUIS, MO	10
2530824 (4)	10/24/29	02/28/30	STD. COUPE	SPARTA, IL	124
3381614 (1)	05/13/30	06/27/30	CC TRUCK	ST. LOUIS, MO	44
3489752 (1)	05/27/30	07/10/30	ROADSTER	ST. LOUIS, MO	43
4623065 (5)	05/05/31	10/27/31	DL. ROADSTER	ST. LOUIS, MO	172

**THANK YOU:** 1. RAY BEARDSLEE; 2. UNKNOWN; 3. MARK WILLIAMSON;  
4. GREG PIEL; 5. EBAY; 6. ARLYN BIEBER;

IF YOU HAVE ANY MODEL A FORD FACTORY OR DEALERSHIP BILL OF SALE DATA THAT COULD BE INCLUDED IN THIS STUDY, INCLUDING ANY "KEY" DATA, PLEASE FILL OUT THE QUESTIONNAIRE AT THE END OF THIS STUDY AND SEND IT TO [steve@plucks329s.org](mailto:steve@plucks329s.org) or to Steve C. Plucker, 12650 Touchet North Road, Touchet, Washington 99360



**SALES AREA FOR FORD'S ASSEMBLY PLANT IN ST. LOUIS, MISSOURI  
FROM THE 1926 ISSUE OF FORD INDUSTRIES**