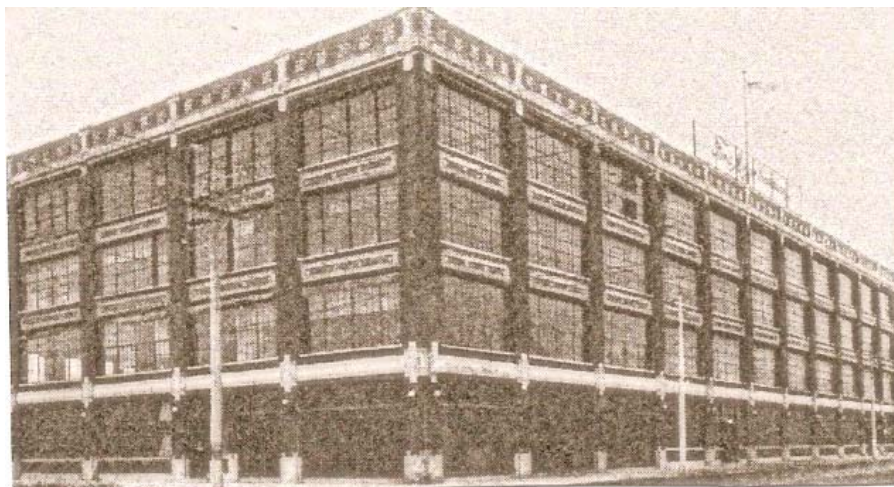


*The Ford Motor Company*

OKLAHOMA CITY, OKLAHOMA



**FORD'S OKLAHOMA CITY, OKLAHOMA ASSEMBLY PLANT**

**LOCATION: 205 WEST FIRST STREET**

**MILES FROM DEARBORN: 1041**

**ASSEMBLY PLANT PRODUCTION CODES: OC**

**PARTS ARRIVED FROM DEARBORN BY: RAIL**

**OPENING DATE FOR MODEL A FORD PRODUCTION: UNKNOWN**  
ABOUT MAY 15, 1928

**CLOSING DATE FOR MODEL A FORD PRODUCTION: UNKNOWN**

**TOTAL PRODUCTION:**

**1928...19,288**

**1929...47,430**

**1930...26,289**

**1931...08,583**

**TOTAL...101,590**

ACCORDING TO THE 1927 ASSEMBLY RECORDS, 188 MODEL A AND AA FORDS WERE SENT TO VARIOUS "ASSEMBLY PLANTS" IN 1927. NO RECORD EXISTS TELLING WHICH ASSEMBLY PLANTS RECEIVED WHAT AND HOW MANY MODELS OF EACH TYPE. THESE CARS AND TRUCKS, NO DOUBT, WERE USED IN THE TOOLING UP OF EACH ASSEMBLY PLANT FOR MAJOR PRODUCTION OF THE "NEW FORD".

**BILL OF SALES**  
OKLAHOMA CITY, OKLAHOMA  
**As of May 3, 2009**

**ASSEMBLY PLANT- BILL OF SALES**  
OKLAHOMA CITY, OKLAHOMA (OC)  
1041 MILES FROM DEARBORN

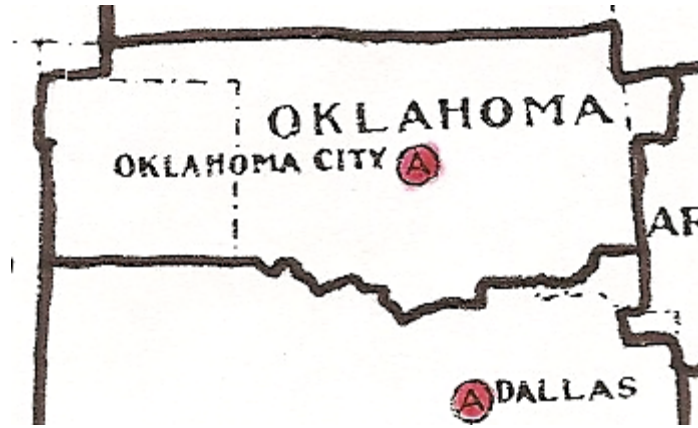
ENGINE NUMBER	STAMP DATE	DATE SOLD	VEHICLE TYPE	DEALER TOWN	INVOICE NUMBER	DAY TO SALE

**DEALERSHIP- BILL OF SALES**  
OKLAHOMA CITY, OKLAHOMA (OC)  
1041 MILES FROM DEARBORN

ENGINE NO.	STAMP DATE	DATE SOLD	VEHICLE TYPE	DEALERSHIP TOWN	DAYS TO SALE
1998130 (1)	07/24/29	08/08/29	STD. COUPE	TULSA, OK	14
2049241 (2)	08/01/29	08/08/29	TN. SEDAN	UNKNOWN	07
4632536 (3)	05/06/31	07/23/31	CON. SEDAN	COALGATE, OK	77

**THANKS TO:** 1. PETER WINNEWISSER; 2. THE RESTORER; 3. DON McADAMS;

IF YOU HAVE ANY MODEL A FORD FACTORY OR DEALERSHIP BILL OF SALE DATA THAT COULD BE INCLUDED IN THIS STUDY, INCLUDING ANY "KEY" DATA, PLEASE FILL OUT THE QUESTIONNAIRE AT THE END OF THIS STUDY AND SEND IT TO [steve@plucks329s.org](mailto:steve@plucks329s.org) or to Steve C. Plucker, 12650 Touchet North Road, Touchet, Washington 99360



**SALES AREA FOR FORD'S ASSEMBLY PLANT IN OKLAHOMA CITY,  
OKLAHOMA  
FROM THE 1926 ISSUE OF FORD INDUSTRIES**