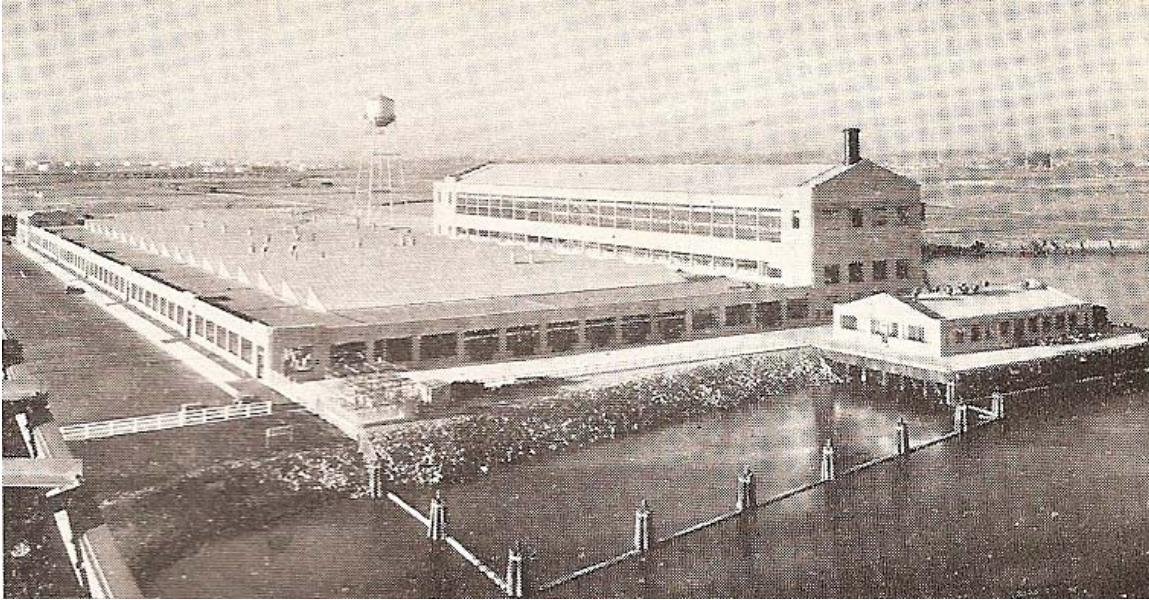


*The Ford Motor Company*

LONG BEACH, CALIFORNIA



**FORD'S LONG BEACH, CALIFORNIA ASSEMBLY PLANT**

**LOCATION: 700 HENRY FORD AVENUE**

**MILES FROM DEARBORN: 2297**

**ASSEMBLY PLANT PRODUCTION CODES: LA**

**PARTS ARRIVED FROM DEARBORN BY: SHIP**

**OPENING DATE FOR MODEL A FORD PRODUCTION: APRIL 21, 1930**

**CLOSING DATE FOR MODEL A FORD PRODUCTION: UNKNOWN**

**TOTAL PRODUCTION:**

**1930...55,900**

**1931...31,824**

**TOTAL...87,724**

**BILL OF SALES**  
LONG BEACH, CALIFORNIA  
**As of October 3, 2008**

**ASSEMBLY PLANT- BILL OF SALES**  
LONG BEACH, CALIFORNIA (LA)  
**2297 MILES FROM DEARBORN**

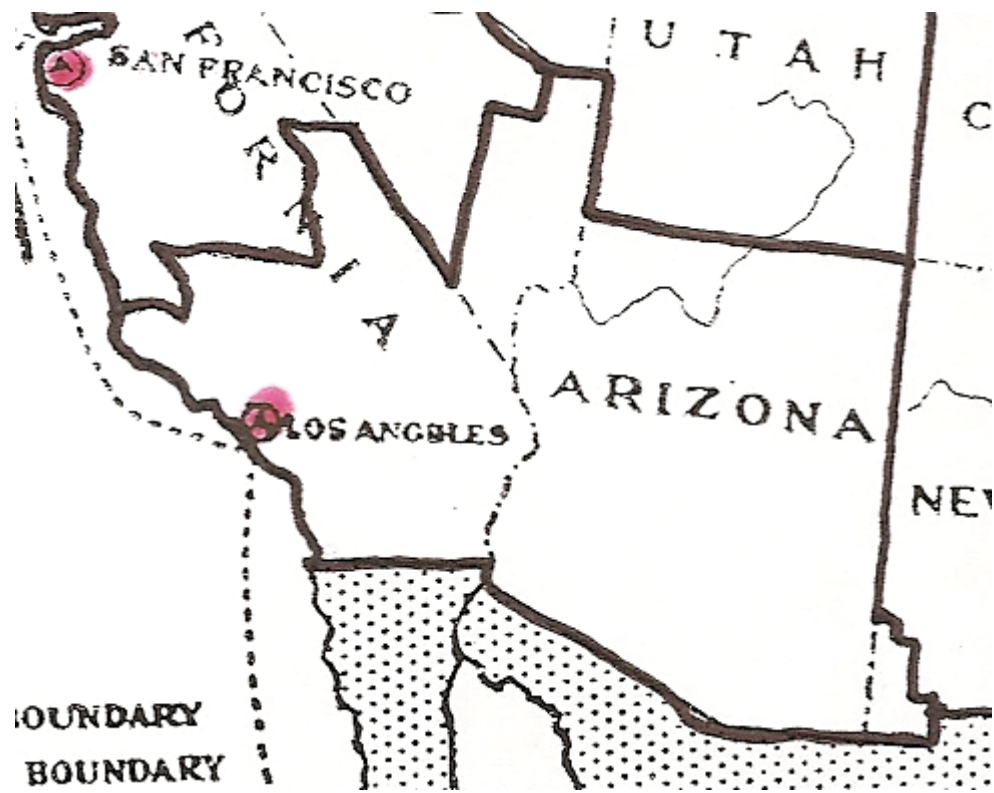
ENGINE NUMBER	STAMP DATE	DATE SOLD	VEHICLE TYPE	DEALER TOWN	INVOICE NUMBER	DAY TO SALE

**DEALERSHIP- BILL OF SALES**  
LONG BEACH, CALIFORNIA (LA)  
**2297 MILES FROM DEARBORN**

ENGINE NO.	STAMP DATE	DATE SOLD	VEHICLE TYPE	DEALERSHIP TOWN	DAYS TO SALE
3360658 (1)	05/09/30	06/07/30	ROADSTER	LA, CA	28
3472318 (2)	05/23/30	07/17/30	CABRIOLET	SAN DEIGO, CA	55
4602684 (3)	04/28/31	12/31/31	COUPE	LA, CA	240

**THANKS TO:** 1. ARLYN BIEBER; 2. THE RESTORER; 3. LYNN WHITE;

IF YOU HAVE ANY MODEL A FORD FACTORY OR DEALERSHIP BILL OF SALE DATA THAT COULD BE INCLUDED IN THIS STUDY, INCLUDING ANY "KEY" DATA, PLEASE FILL OUT THE QUESTIONNAIRE AT THE END OF THIS STUDY AND SEND IT TO [steve@plucks329s.org](mailto:steve@plucks329s.org) or to Steve C. Plucker, 12650 Touchet North Road, Touchet, Washington 99360



**SALES AREA FOR FORD'S ASSEMBLY PLANT IN LONG BEACH,  
CALIFORNIA  
FROM THE 1926 ISSUE OF FORD INDUSTRIES**