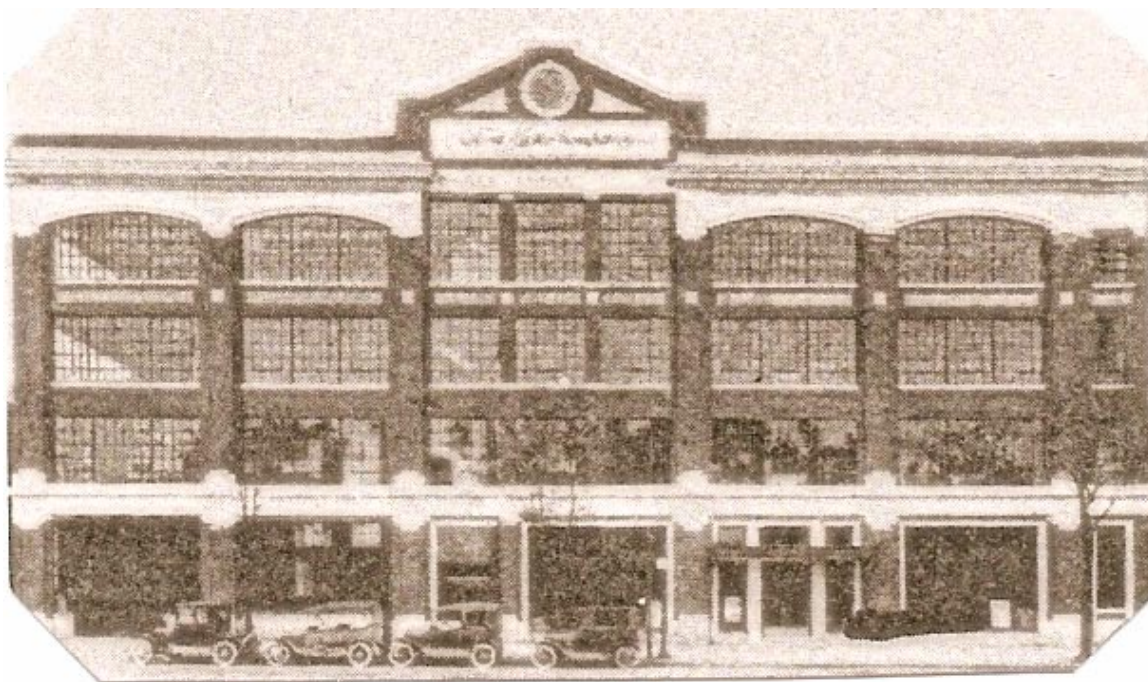


The Ford Motor Company

INDIANAPOLIS, INDIANA



FORD'S INDIANAPOLIS, INDIANA ASSEMBLY PLANT

LOCATION: 1300 EAST WASHINGTON STREET

MILES FROM DEARBORN: 291

ASSEMBLY PLANT PRODUCTION CODES: I

PARTS ARRIVED FROM DEARBORN BY: RAIL

OPENING DATE FOR MODEL A FORD PRODUCTION: UNKNOWN

CLOSING DATE FOR MODEL A FORD PRODUCTION: UNKNOWN

TOTAL PRODUCTION:

1928...13,005

1929...38,176

1930...25,065

1931...11,975

TOTAL...88,221

ACCORDING TO THE 1927 ASSEMBLY RECORDS, 188 MODEL A AND AA FORDS WERE SENT TO VARIOUS "ASSEMBLY PLANTS" IN 1927. NO RECORD EXISTS TELLING WHICH ASSEMBLY PLANTS RECEIVED WHAT AND HOW MANY MODELS OF EACH TYPE. THESE CARS AND TRUCKS, NO DOUBT, WERE USED IN THE TOOLING UP OF EACH ASSEMBLY PLANT FOR MAJOR PRODUCTION OF THE "NEW FORD".

BILL OF SALES
 INDIANAPOLIS, INDIANA
As of August 20, 2008

ASSEMBLY PLANT- BILL OF SALES
 INDIANAPOLIS, INDIANA (I)
 291 MILES FROM DEARBORN

| ENGINE NUMBER | STAMP DATE | DATE SOLD | VEHICLE TYPE | DEALER TOWN | INVOICE NUMBER | DAYS TO SALE |
|---------------|------------|-----------|--------------|-------------|----------------|--------------|
| 0074668 (1) | 04/05/28 | 04/10/28 | UNKNOWN | UNKNOWN | UNKNOWN | 05 |

DEALERSHIP- BILL OF SALES
 INDIANAPOLIS, INDIANA (I)
 291 MILES FROM DEARBORN

| ENGINE NO. | STAMP DATE | DATE SOLD | VEHICLE TYPE | DEALERSHIP TOWN | DAYS TO SALE |
|------------|------------|-----------|--------------|-----------------|--------------|
| | | | | | |

THANKS TO: 1. FORD NEWS;

IF YOU HAVE ANY MODEL A FORD FACTORY OR DEALERSHIP BILL OF SALE DATA THAT COULD BE INCLUDED IN THIS STUDY, INCLUDING ANY "KEY" DATA, PLEASE FILL OUT THE QUESTIONNAIRE AT THE END OF THIS STUDY AND SEND IT TO steve@plucks329s.org or to Steve C. Plucker, 12650 Touchet North Road, Touchet, Washington 99360



**SALES AREA FOR FORD'S ASSEMBLY PLANT IN INDIANAPOLIS, INDIANA
FROM THE 1926 ISSUE OF FORD INDUSTRIES**