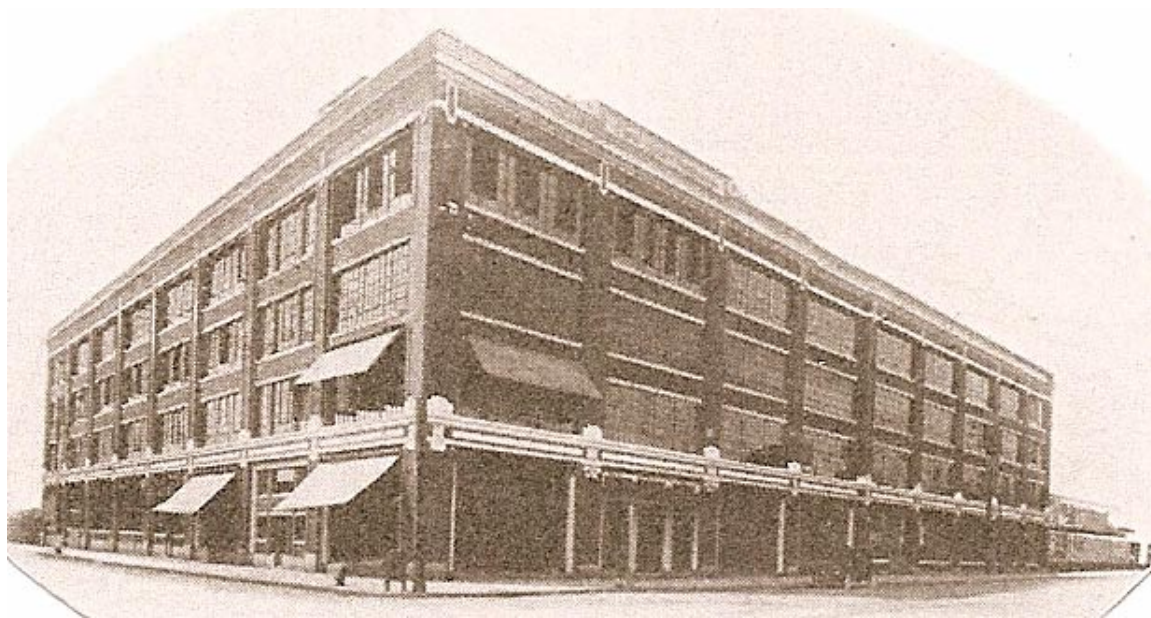


The Ford Motor Company

COLUMBUS, OHIO



FORD'S COLUMBUS, OHIO ASSEMBLY PLANT

LOCATION: 427 CLEVELAND AVENUE

MILES FROM DEARBORN: 206

ASSEMBLY PLANT PRODUCTION CODES: G

PARTS ARRIVED FROM DEARBORN BY: RAIL

OPENING DATE FOR MODEL A FORD PRODUCTION: UNKNOWN

CLOSING DATE FOR MODEL A FORD PRODUCTION: UNKNOWN

TOTAL PRODUCTION:

1928...09,757

1929...37,255

1930...25,192

1931...11,549

TOTAL...83,753

ACCORDING TO THE 1927 ASSEMBLY RECORDS, 188 MODEL A AND AA FORDS WERE SENT TO VARIOUS "ASSEMBLY PLANTS" IN 1927. NO RECORD EXISTS TELLING WHICH ASSEMBLY PLANTS RECEIVED WHAT AND HOW MANY MODELS OF EACH TYPE. THESE CARS AND TRUCKS, NO DOUBT, WERE USED IN THE TOOLING UP OF EACH ASSEMBLY PLANT FOR MAJOR PRODUCTION OF THE "NEW FORD".

BILLS OF SALE
COLUMBUS, OHIO
As of August 20, 2008

ASSEMBLY PLANT- BILL OF SALES
COLUMBUS, OHIO (G)
206 MILES FROM DEARBORN

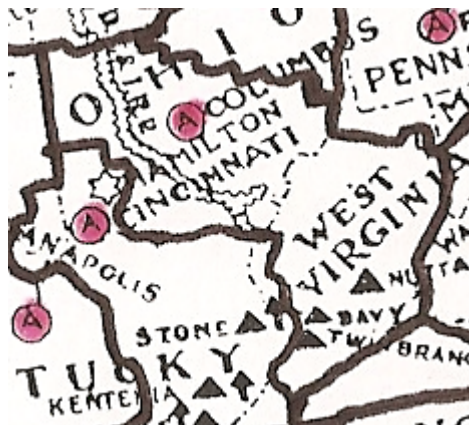
ENGINE NUMBER	STAMP DATE	DATE SOLD	VEHICLE TYPE	DEALER TOWN	INVOICE NUMBER	DAYS TO SALE

DEALERSHIP- BILL OF SALES
COLUMBUS, OHIO (G)
206 MILES FROM DEARBORN

ENGINE NO.	STAMP DATE	DATE SOLD	VEHICLE TYPE	DEALERSHIP TOWN	DAYS TO SALE

THANKS TO:

IF YOU HAVE ANY MODEL A FORD FACTORY OR DEALERSHIP BILL OF SALE DATA THAT COULD BE INCLUDED IN THIS STUDY, INCLUDING ANY "KEY" DATA, PLEASE FILL OUT THE QUESTIONNAIRE AT THE END OF THIS STUDY AND SEND IT TO steve@plucks329s.org or to Steve C. Plucker, 12650 Touchet North Road, Touchet, Washington 99360



**SALES AREA FOR FORD'S ASSEMBLY PLANT IN COLUMBIUS, OHIO
FROM THE 1926 ISSUE OF FORD INDUSTRIES**